

CONTROL PANEL-STANDARD TWIN PUMP

Mild steel cabinet protection rated to IP55 in stove enamelled finish for internal wall or backboard mounting, with front door access, incorporating:

One Door interlocked isolator (lockable).

Two Set(s) motor HRC fuse link plus necessary HRC fuses for control circuit and transformer.

Two Contactor starters incorporating thermal overload protection rated for each pump.

One Power ON healthy lamp.

Two Set(s) of Run and Trip lamps.

One High level alarm unit with buzzer, light and mute button.

Two Hand-Off-Auto switches.

Automatic duty pump alternator, to provide cycling of each pump operation.

Low voltage control circuit serving level controls

Volt free contacts for remote monitoring / interfacing with clients BMS system / Alarm Dial Out Unit.

Internal wiring diagram.

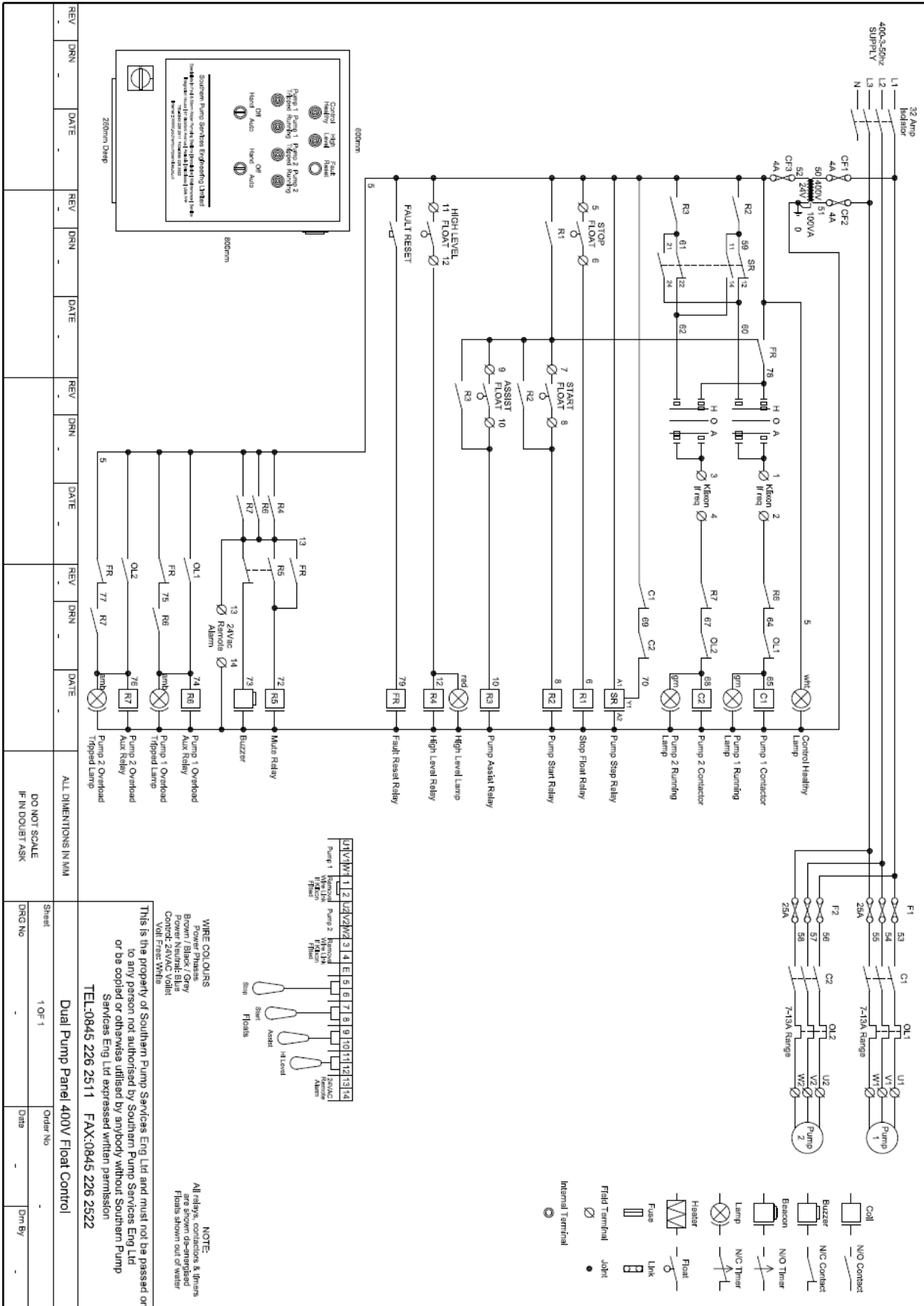
Set of internal terminals for others to connect.

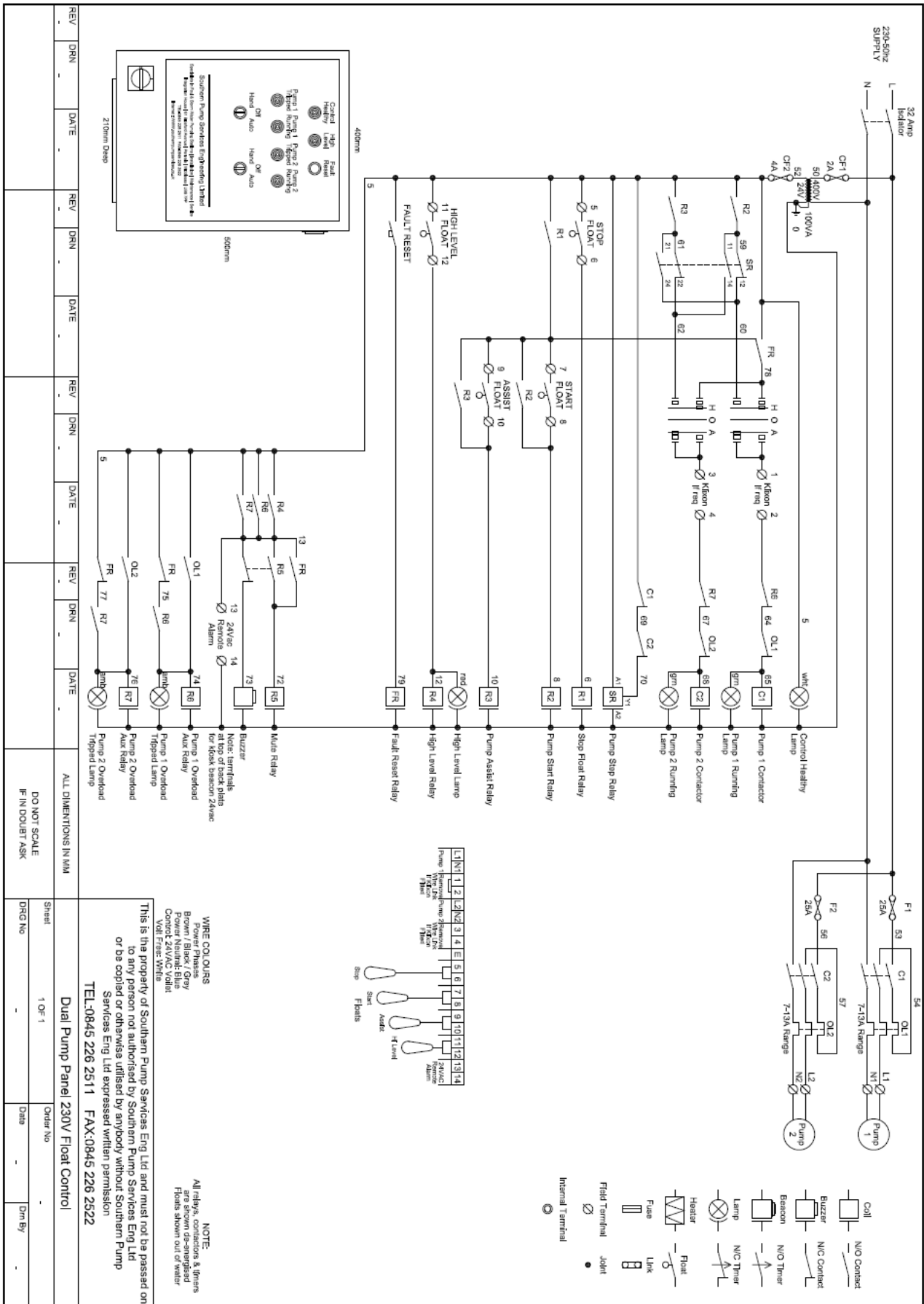


Optional Items

GSM or BT Alarm Dial Out Unit providing message service to dedicated telephone number(s) in the event of alarm status. Further details on request.

Inverter drive units to facilitate starting / running of 230v-3ph-50hz wound pump motors for use on larger motors (above 1.8kW) where a 230v single phase supply is only available.





REV	DRN	DATE	REV	DRN	DATE	REV	DRN	DATE	REV	DRN	DATE

ALL DIMENSIONS IN MM
DO NOT SCALE
IF IN DOUBT ASK

Sheet 1 OF 1
Order No
Date
Dwg No
Dwn By

Dual Pump Panel 230V Float Control

This is the property of Southern Pump Services Eng Ltd and must not be passed on to any person not authorised by Southern Pump Services Eng Ltd or be copied or otherwise utilised by anybody without Southern Pump Services Eng Ltd expressed written permission.

TEL:0845 226 2511 FAX:0845 226 2522